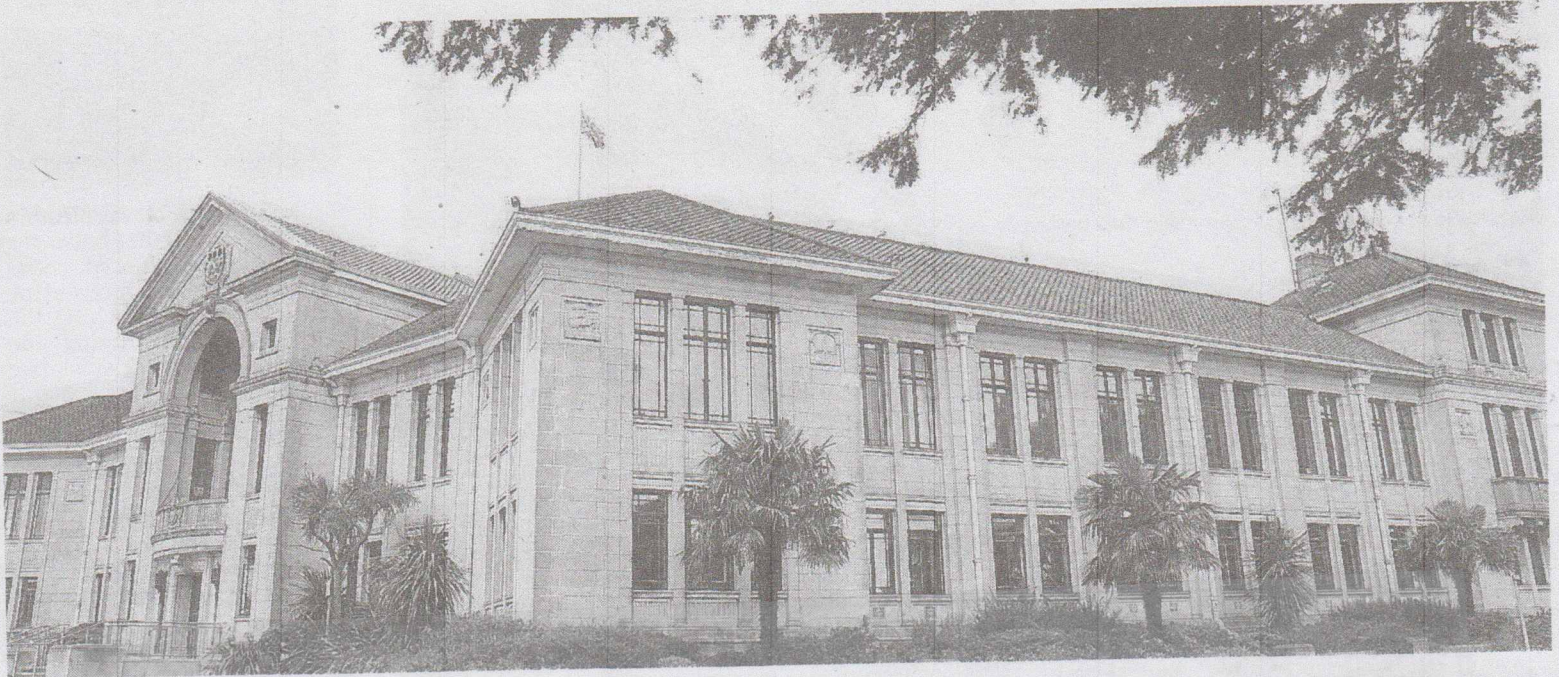


Civic centre is now a listed building



Poole Civic Centre

POOLE Civic Centre is now officially a Grade II listed building, giving it enhanced protection against any future redevelopment plans.

The Society For Poole initiated the application with Historic England, amid concerns the "heritage of Poole could be eroded" following the creation of the BCP Council.

Earlier this month the Daily Echo reported how plans to create a single office hub and make hundreds of job cuts had been outlined by BCP Council as part of the next phase of local government reorganisation – a move which is hoped will save as much as £37 million a year.

In a report to cabinet, BCP Council director of resources Julian Osgathorpe said no decision had been made on whether the hub would be one of its existing buildings, such as Poole Civic Centre, or whether a new headquarters would be created.

However, back in 2016 Poole Civic

Jim Durkin



Centre was included in the Poole Local Plan, which was essentially a blueprint of possible future redevelopment drawn up by then then Borough of Poole, as a site where 350 new homes could be built.

While the Grade II listing does not prohibit redevelopment of the site, it does put up a significant layer of protection and means Historic England will have to be consulted on any future plans.

Society of Poole chairman Mike Pearce told the Daily Echo: "We were concerned that as part of the BCP conurbation that the heritage of Poole could be eroded.

"We thought there was a layer of historical preservation that needed to be put on it so we could maintain as much as possible of the character

and feel of the building." Poole Civic Centre, which still holds BCP Council committee meetings, was constructed in 1931-32. According to Historic England it is a "prominent and accomplished" civic building which has "distinct quality and presence."

Listed buildings can be altered, extended and sometimes even demolished within government planning guidance.

A Historic England spokesman said: "The local authority uses listed building consent to make decisions that balance the site's historic significance against other issues, such as its function, condition or viability."

A BCP Council spokesman said: "The fact that the Civic Centre is now grade II listed will inform BCP Council's decision making process about how it will operate as an organisation in the future. It will be one of the many considerations that will be examined going forward."